

SPECIFICATIONS

Maximum Working Height (on 0.6m Vehicle Deck)	12,0 metres	
Ground to Bucket Floor (on 0.9m Vehicle Deck Height)	10,5 metres	
Ground to Bucket Floor at Max. Sideways Outreach	5,5 metres	
Maximum Sideways Outreach	4,5 metres	
Overall length of unit in stowed Traveling Position	7,0 metres	
Height above Vehicle Deck		
(Varies Mast is adjusted to clear on Abnormal Cab Height)	2,2 metres	
Overall width of Mounting Base across Vehicle Deck	1,3 metres	
Inside Bucket Dimensions (Approximately)	Front	1,06 metres
	Side Width	0,65 metres
	Depth	1,12 metres
Safe Working Load with Stabilizers	250 kg	
Approximate weight of unit	1400 kg	
Oil tank capacity	42 litres	
Recommended oil flow	8 litres/min.	
Maximum Working Pressure and Relief Valve Setting	15 Mpa	
Rotation in either direction (Non-Continuous)	370 degrees	
Rotation (Skewing) Torque	5 000 Nm	

SAFETY FEATURES

Boom Geometry, Bucket Leveling and Stroke of Lift Cylinders prevent the Booms from moving into an Overcentre or Unsafe position.

Both Lift Cylinders are fitted with Double Over Centre Valves to prevent Booms Dropping in the event of Hose Failure.

Stabilizer Leg Control is independent of Main Platform Controls an Isolating Selector Lock Valve preventing the Stabilizers being raised during operation of the Platform.

In the event of overloading, the Main Relief Valve prevents the Bucket from being raised.

Speed of descent is regulated by a Flow Control Valve.

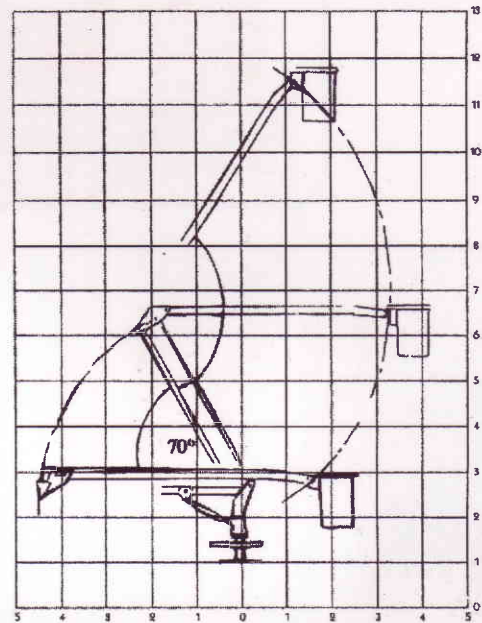
The Slewing Mechanism is designed to hold the platform in position when operating on a gradient.

Safety Harness Anchor Points are provided in the Bucket area and Safety belts supplied as Standard Equipment.

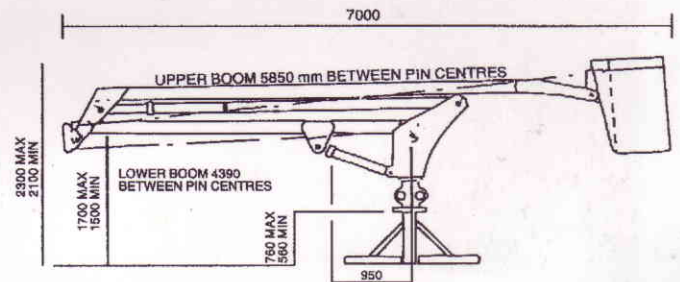
Weight Load Test Safety Factor: 3:1
Structural Safety Factor: 5:1
All Hinge Pins over dimensioned.

Emergency Hand pump to facilitate positioning of Booms or Lower Operator in the event of Engine Power Failure.

WORKING RANGE



STOWED PLATFORM DIMENSIONS



STANDARD FEATURES

OPERATOR CONTROLS

Dual Controls. One set at the base of the unit which override a second set mounted in the Aerial Bucket.

MAST COLUMN AND ROTATION

Mast Pillar is housed within a Tubular Column Base and can be Height adjusted (at the time of installation) to allow any necessary additional vehicle Cab Clearance.

ROTATION

Hydraulically operated rack and Pinion type, Slewing mechanism with 370° rotation in either direction (Non-continuous) with a Torque of 5 000NM.

Hydraulic System is fitted with a Flow Control Regulator allowing the operator to set the Slewing at a decreased or increased speed according to operational requirements.

LIFT CYLINDERS

Double acting on both Lower and Upper Booms.

STABILIZER JACKS

One set of 'A' frame type Stabilizers are supplied as standard with each unit. Operation is independent of the Platform's controls with an isolating change over selector valve - See safety features.

An additional set of Stabilizers may be necessary for certain applications or where the stability of the carrier vehicle is in question.

PERSONNEL BUCKET

A two-man capacity fibreglass, centrally mounted Bucket.

BUCKET LEVELING

By means of four Leveling Rods or Cables running parallel to and on each side of the Lower and Upper Booms, with anchoring points on each side of the Bucket, Boom articulation linkage and Base Turret.

OPERATING CONTROLS

Proportional functioning of Hydraulic Levers during operation ensures smooth control of all movements.

POWER SOURCE

Two basic options are available.

P.T.O. DRIVE

The Platform's Hydraulic Pump is driven from the Vehicle Gearbox via a Power Takeoff. The vehicle therefore runs whilst the Platform is in use.

POWER PACK

The Hydraulic Pump is driven by a separate Petrol Engine and Pump Drive, mounted on the Platform Turret. Electric or pull-start options are also available. Diesel Engine Power Packs can also be supplied on request.

MANUFACTURING STANDARDS

The SAFELIFT 12 000 complies with the provisions of the Occupational Health and Safety Act and is manufactured in accordance with SABS 0157 (ISO 9001) requirements.

OPTIONAL EQUIPMENT

Hydraulic Tool Circuit
Additional Stabilizers
Bucket Tool Trays

MINIMUM VEHICLE REQUIREMENTS

The Stowed (Traveling length) of the SAFELIFT 12 000 is 7 000mm. Suitability of the carrier vehicle in respect of Overhang, Axle loadings and stability should be confirmed with the Platform or vehicle supplier.

HEAD OFFICE

17 Derrick Road
Spartan
P.O. Box 600, Kempton Park 1620
Telephone: (011) 394-6005
Fax: (011) 573-2331
e-mail: sales600@mweb.co.za
Website: <http://www.600sa.co.za>



Branches

Durban (031) 705-2311
Johannesburg (011) 394-6005
Nelspruit (013) 758-1334
Polokwane (015) 293-0386